

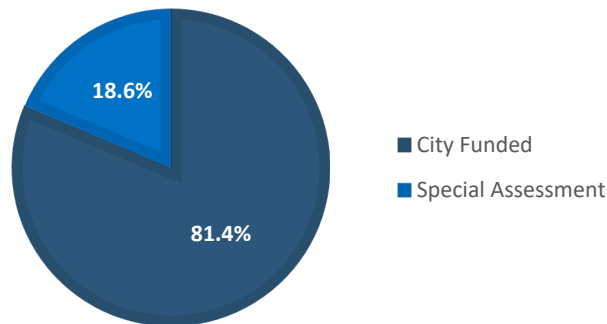
## IMPROVEMENT DISTRICT NUMBER: BR-25-E1

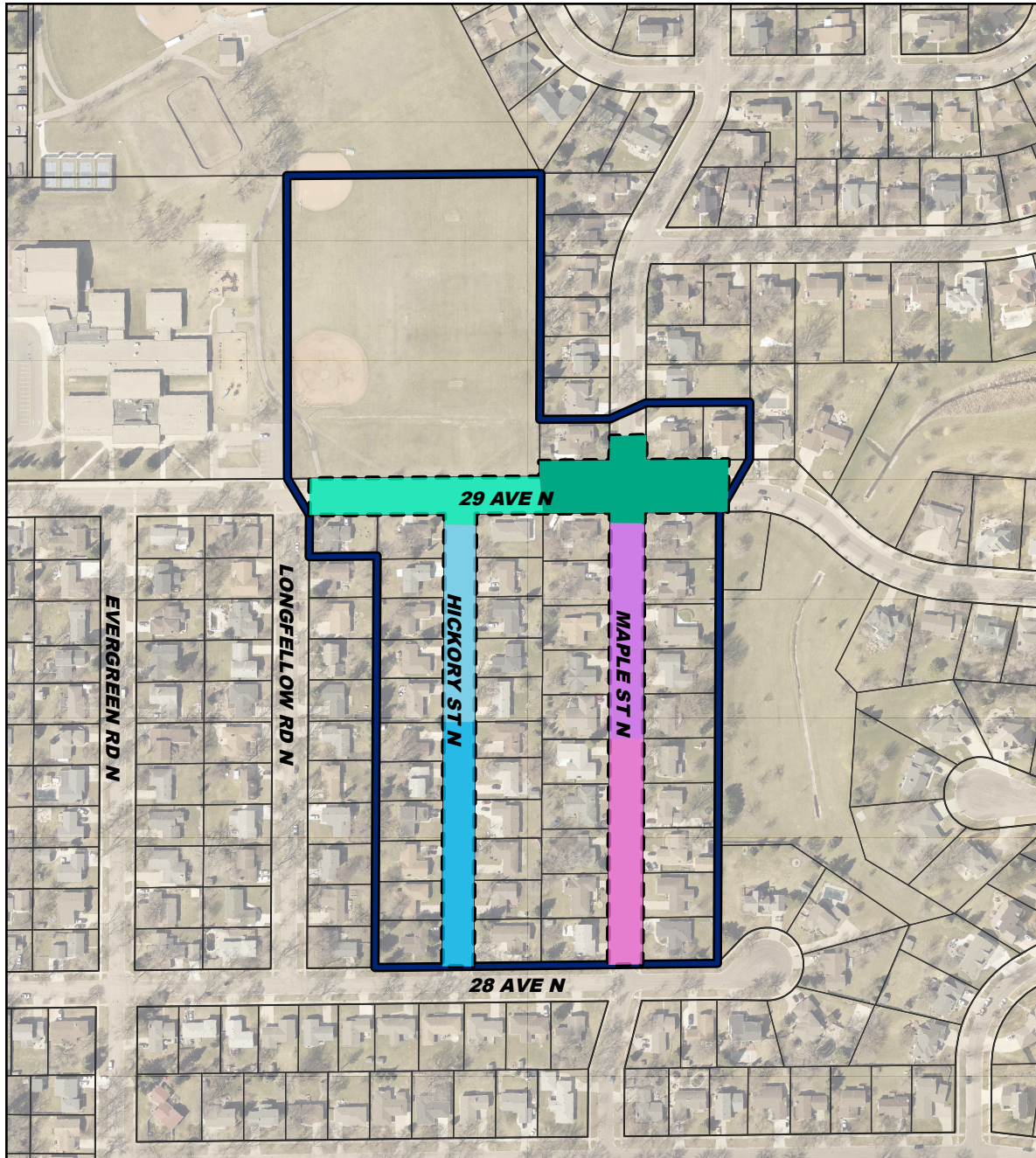
<b>CIP Year</b>	2025		
<b>Bid Date</b>	2/26/2025	<b>Completion Date</b>	10/10/2025
<b>Project Manager</b>	Shane Geraghty	<b>Contractor</b>	Dakota Underground Co Inc
<b>Work Type</b>	Utilities and Paving Repl/Rehab		
<b>Special Assessed</b>	Yes	<b>For More Information</b>	<a href="https://www.fargostreets.com">https://www.fargostreets.com</a>

**Project Purpose**

The existing asbestos cement watermain, which is over 50 years old, will be replaced with PVC pipe to prevent future breaks. As part of the project, watermain services will be replaced from the main to the curb stops. Although the sanitary sewer main is in good condition, the services will be replaced from the main to behind the curb to avoid potential sanitary sewer breaks under the new pavement. Due to the existing street condition and the planned utility replacements, complete pavement reconstruction will be required. This reconstruction will include new curb and gutter, concrete driveway aprons, sidewalks, and bituminous pavement. The storm sewer will also be upgraded as part of the roadway reconstruction, and streetlights will be updated in conjunction with the project. The project will be funded through a combination of Prairie Dog Funds and Special Assessments to benefiting properties, with assessments applied according to City policy.

### COST DISTRIBUTION





PHASING DETAILS

- PHASE 1A: 60 DAYS
- PHASE 1B: 60 DAYS
- PHASE 2A: 60 DAYS
- PHASE 2B: 60 DAYS
- PHASE 3A: 60 DAYS
- PHASE 3B: 35 DAYS

DAYS ARE COUNTED AS CALENDAR DAYS, NOT WORKING DAYS.

MULTIPLE PHASES WILL NEED TO RUN CONCURRENTLY TO GET THIS PROJECT FINISHED BY THE COMPLETION DATES AS SPECIFIED IN THE SPECIAL INSTRUCTION TO BIDDERS.

WORK MAY NOT COMMENCE ON PHASE 1B UNTIL UNDERGROUND WORK IS COMPLETE ON PHASE 1A. WORK MAY NOT COMMENCE ON PHASE 2B UNTIL UNDERGROUND WORK ON 2A IS COMPLETE.

WORK MAY NOT BEGIN ON PHASE 3A OR 3B UNTIL JUNE 9, 2025 AND MUST BE COMPLETE FOR PHASE 3A AND 3B BY AUGUST 23, 2025.

Special Assessment Boundary

